

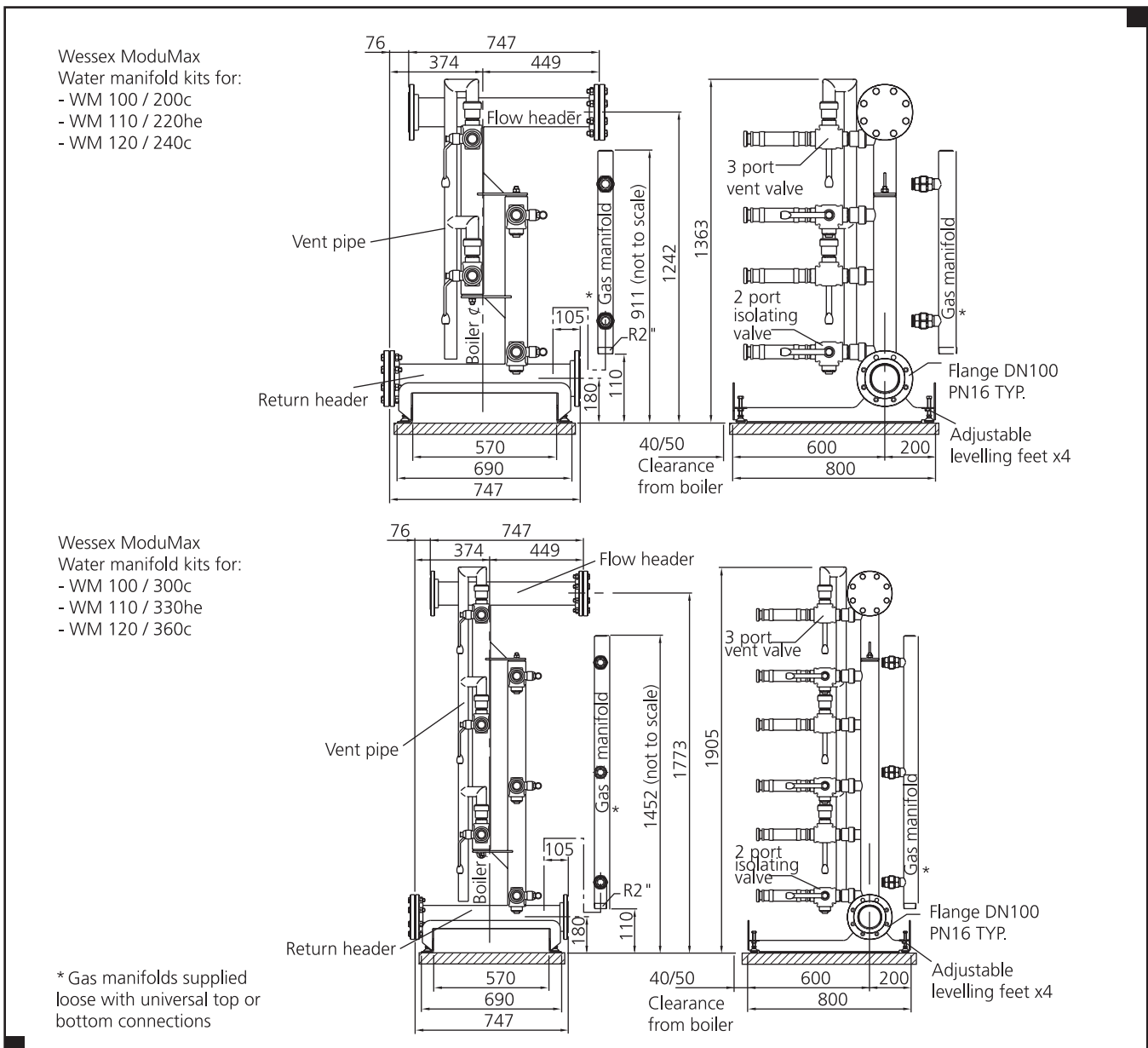
# Dimensional Details

## Wessex ModuMax WM 100c / 110he / 120c Manifold Kits

Designed to save time and simplify procurement, optional manifold kits are available for the Wessex ModuMax. The kits enable multiple boilers to be connected in configurations of 2 and 3 modules. The manifold kits are factory tested and supplied part assembled for ease of installation.

Manifold kits include:

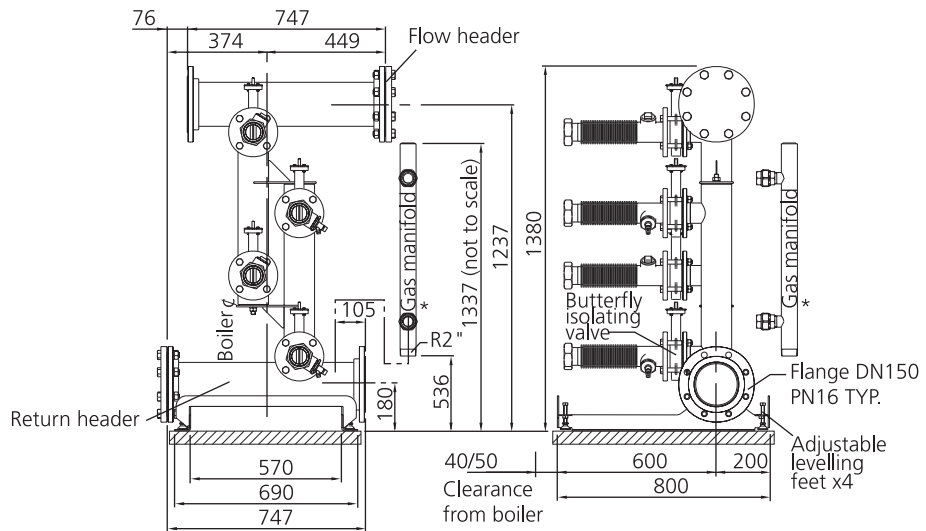
- Isolating ball valves for water flow and return connections on each boiler module
- Flow and return headers plus gas manifold
- Pre assembled flow and return header assemblies
- Pre assembled flow and return pipe sub assemblies between boilers and headers
- Blanking flanges for header ends
- Adjustable levelling feet



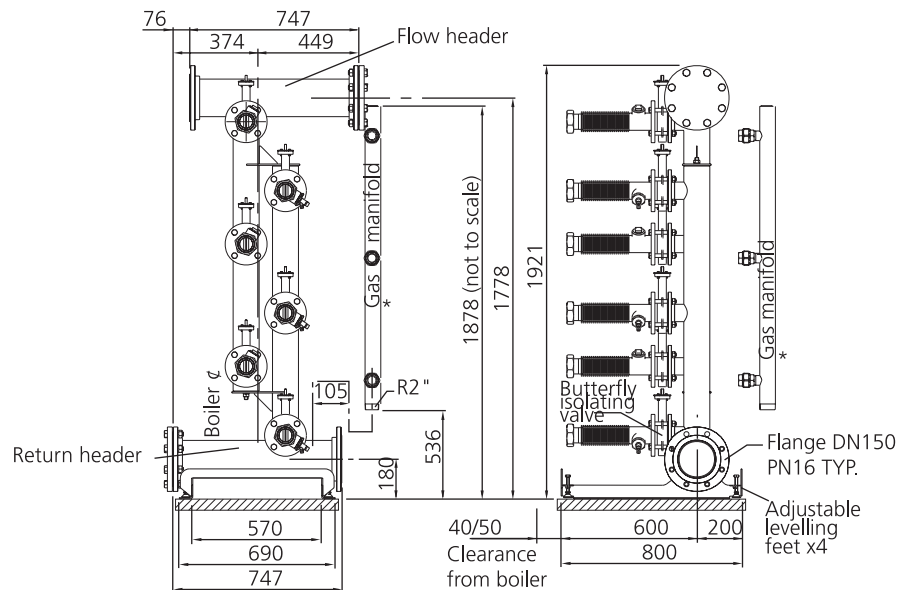
# Dimensional Details

Wessex ModuMax WM 150c / 160he / 200c / 220he / 250c Manifold Kits

Wessex ModuMax  
Water manifold kits for:  
- WM 150 / 300c  
- WM 160 / 320he  
- WM 200 / 400c  
- WM 220 / 440he  
- WM 250 / 500c



Wessex ModuMax  
Water manifold kits for:  
- WM 150 / 450c  
- WM 160 / 480he  
- WM 200 / 600c  
- WM 220 / 660he  
- WM 250 / 750c



\* Gas manifolds supplied loose with a universal top or bottom connection.