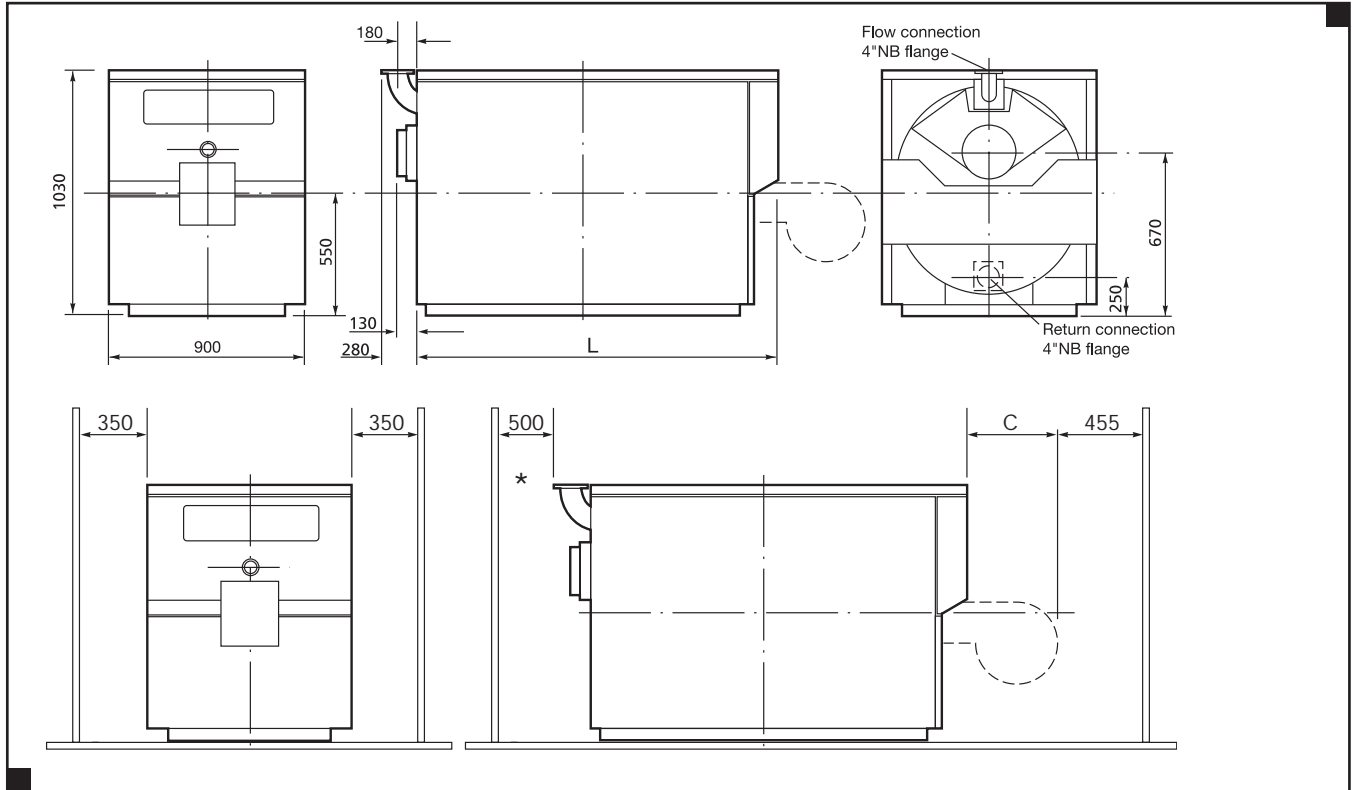


Shaftesbury Dimensions



Layout

The Shaftesbury wet section is located in a steel cradle, which provides a secure foundation for the boiler and reduces the boiler build time, thus obviating the need for a raised plinth. The boiler should be installed on a

level, fire proof surface which should be capable of supporting the weight of the boiler, pipework and ancillary equipment when filled with water.

Boiler Clearances

The Shaftesbury series requires adequate clearances for fuel, flue, water connections and maintenance.

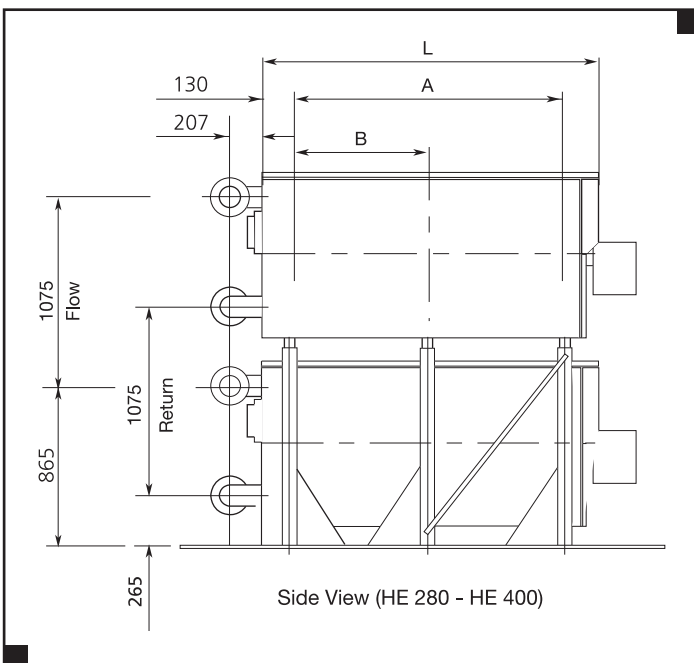
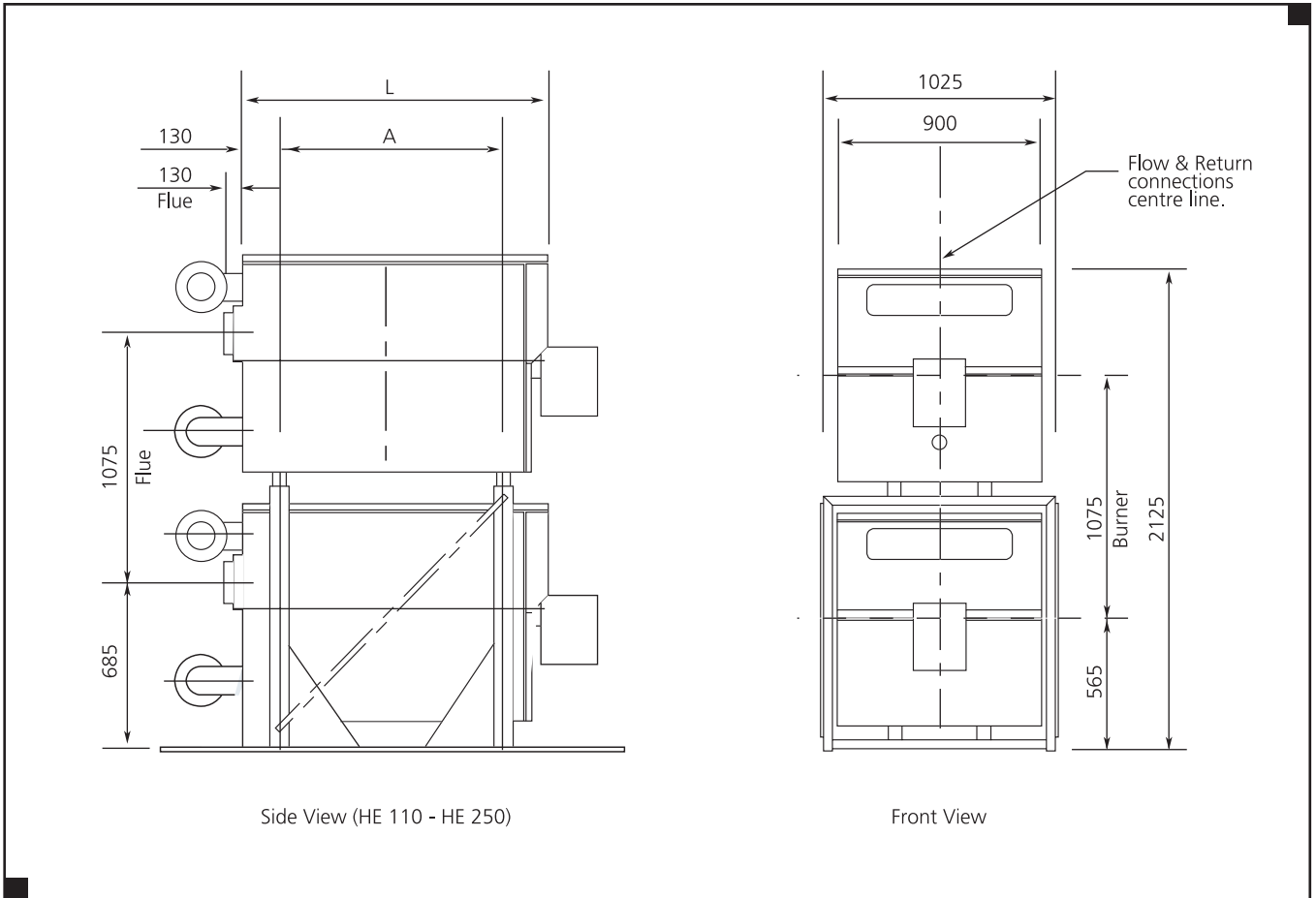
Model	C (mm)						L (mm)	Shipping Weight (Kg) Approx
	Oil		Gas		Dual Fuel			
	Riello	NuWay	Riello	NuWay	Riello	NuWay		
HE 110	261	N/a	356	N/a	N/a	N/a	840	508
HE 150	434	N/a	356	N/a	N/a	N/a	960	592
HE 190	434	N/a	546	N/a	N/a	N/a	1080	676
HE 220	434	N/a	546	N/a	N/a	N/a	1200	755
HE 250	434	N/a	546	N/a	N/a	N/a	1320	834
HE 280	434	546	546	699	611	716	1440	923
HE 310	434	546	546	699	611	N/a	1560	1012
HE 340	434	546	546	699	611	N/a	1680	1106
HE 370	434	652	546	699	N/a	N/a	1800	1200
HE 400	434	652	546	699	N/a	N/a	1920	1274

* This dimension is a minimum recommendation permitting access to the rear of the boiler for maintenance (800mm for stacked boilers). It may not, however, be adequate for the installation of flue bends within the boiler house. Where necessary this dimension must be increased accordingly.

Shaftesbury

Stacking Frames
Layout & Dimensions

All dimensions in mm



Model	Dim A	Dim B	Dim L
HE 110	490	N/A	840
HE 150	610	N/A	960
HE 190	730	N/A	1080
HE 220	850	N/A	1200
HE 250	970	N/A	1320
HE 280	1090	545	1440
HE 310	1210	605	1560
HE 340	1330	665	1680
HE 370	1450	725	1800
HE 400	1570	785	1920