

Dimensional Details

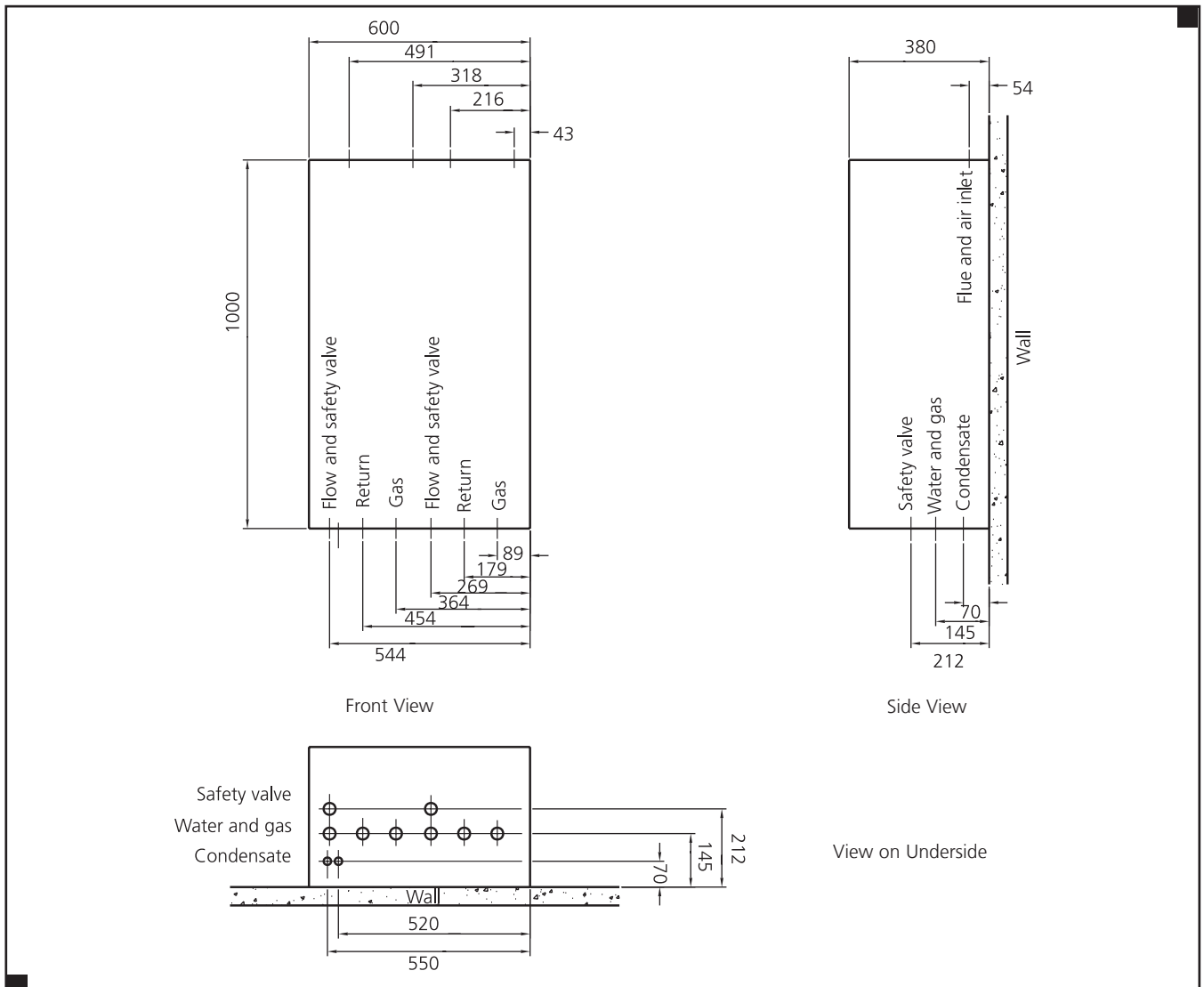
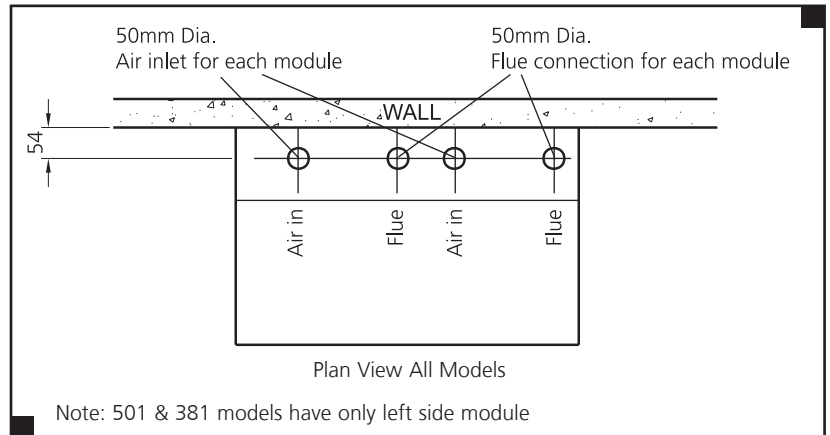
The Milborne 381 and 501 have a single boiler module fitted to the left hand side of the casing, whereas the Milborne 382 and 502 each have a pair of boiler modules within the casing.

All Milborne boilers have the same size case.

On all models the condensate drains from the bottom of the casing via 18mm plastic pipes.

The flue and air inlet connections are 50mm diameter on each module and use polypropylene components.

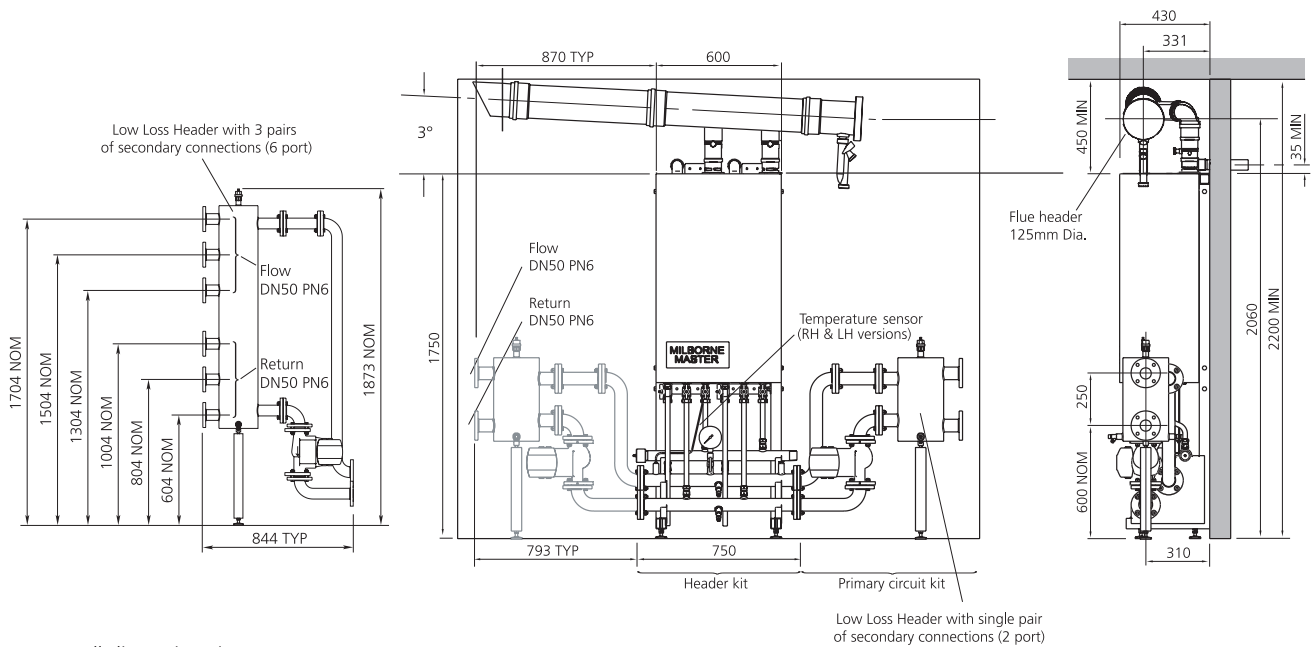
See data table on page 6 for full details of boiler connection sizes



Dimensional Details

Milborne

Single Milborne Boiler with Flue Header, Pipe Kit Header and In-line Primary Circuit Kit



Four Milborne Boilers, Back-to-back Frame Sets and Pipe Header Kits

