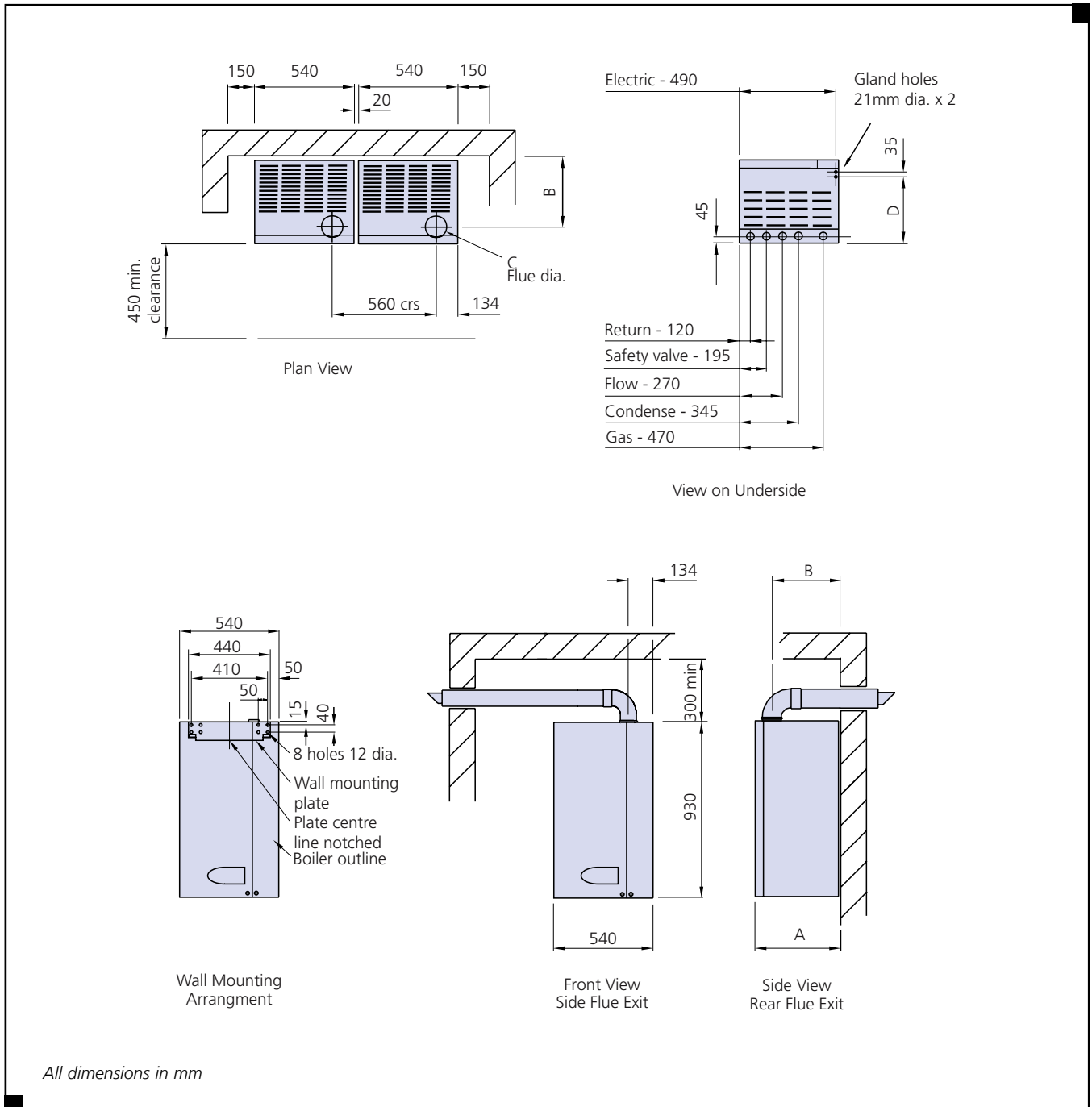


# Dimensional Details

## Fleet Wall Hung Boilers

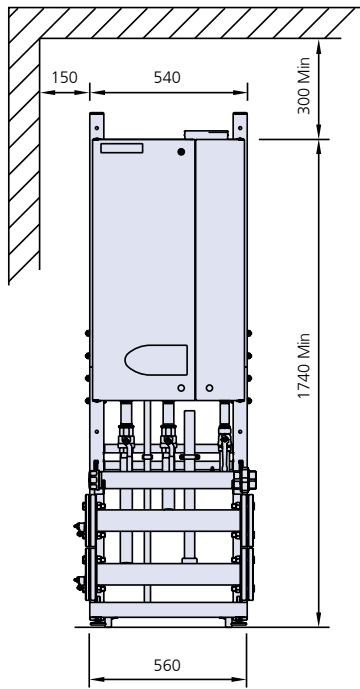


Model	Dimension	F40W	F50W	F60W	F70W	F85W	F100W	F125W	F150W
Casing depth	A				470				570
Flue depth	B				380				480
Flue diameter	C				80/125				100/150
Electrical connections	D				350				450

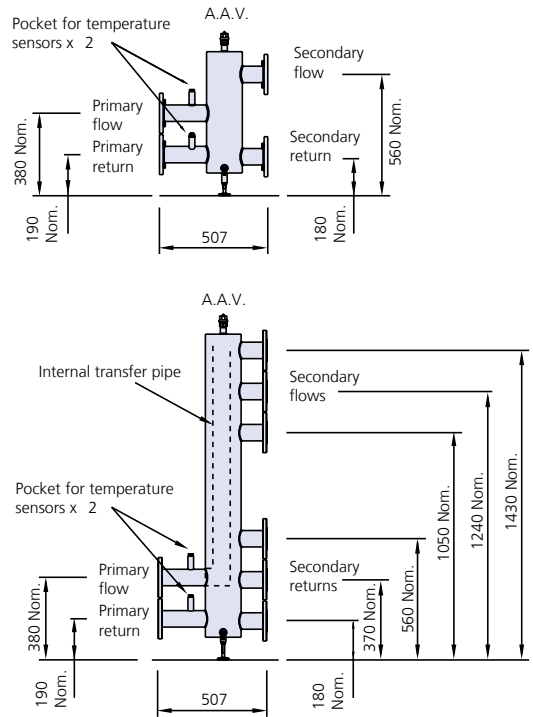
# Dimensional Details

## Fleet Wall Hung Boiler Pipe Kits & Flue Headers

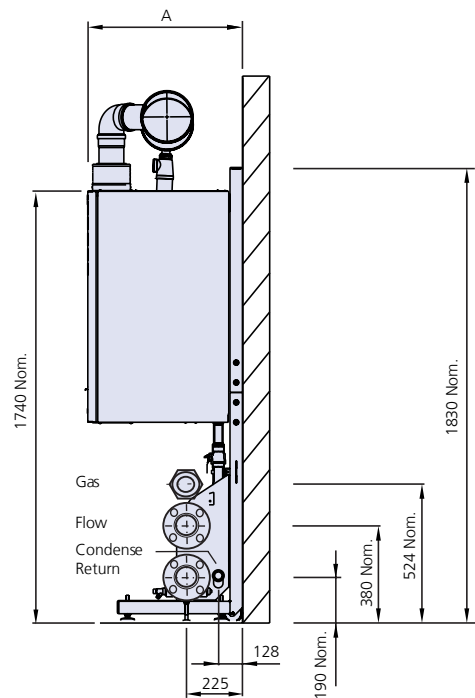
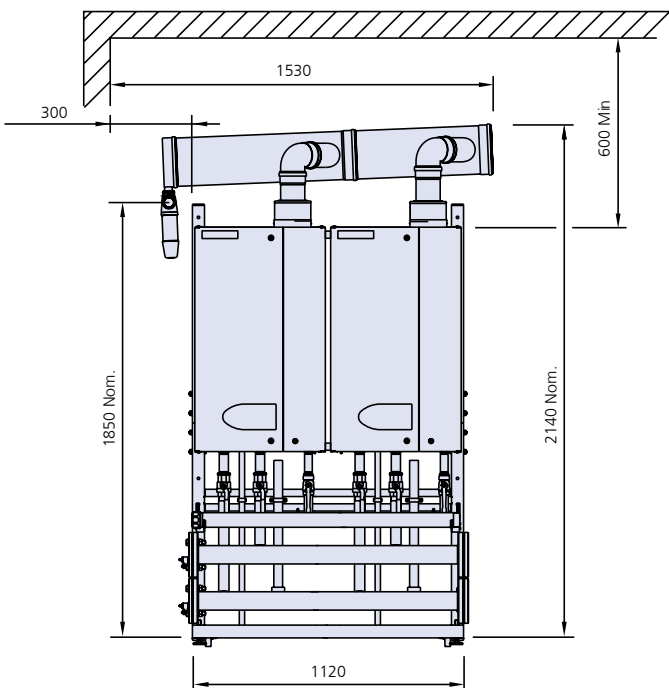
### Single boiler arrangement



### Low Loss headers



### Two boiler arrangement



# Dimensional Details

## Fleet Wall Hung Boiler Pipe Kits & Flue Headers

### Pipe kit and low loss header connection sizes

For boilers F40W to F100W	
Flow	DN50 – PN16
Return	DN50 – PN16
Gas	R1½"
Condense	40mm

For boilers F125W to F150W	
Flow	DN65 – PN16
Return	DN65 – PN16
Gas	R2"
Condense	40mm

### Boiler dimensions

Model	Dimension A
F40W to F100W	470
F125W to F150W	570

