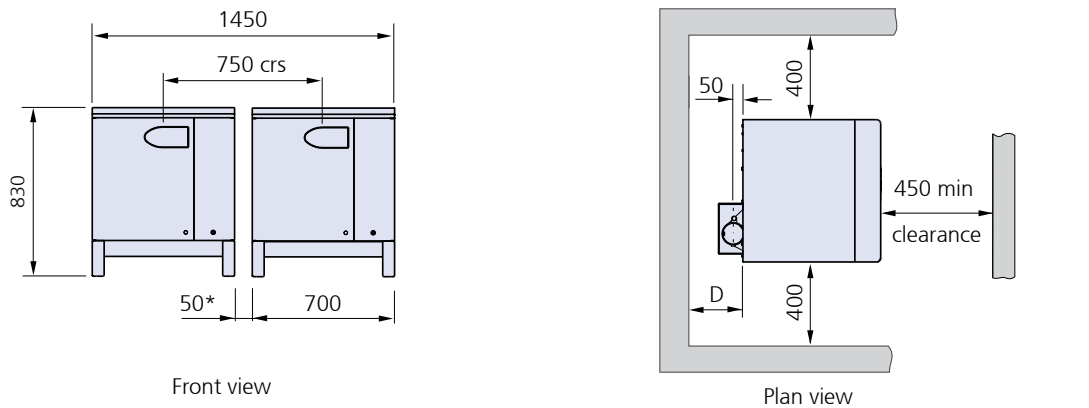
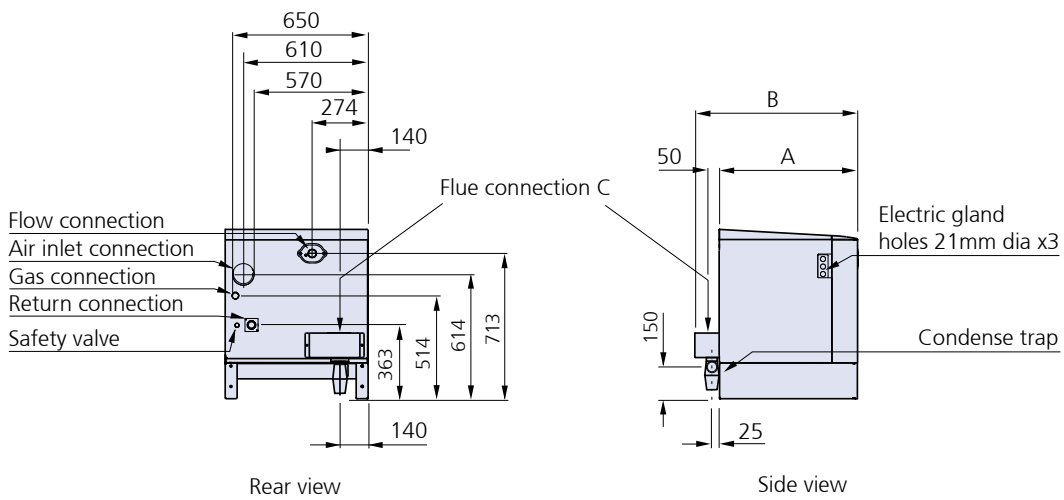


# Dimensional Details

## Fleet Horizontal Boilers



Note:  
 \* Space between boilers to allow for access to electrical gland plate and to suit Hamworthy pipe kits.



All dimensions in mm.

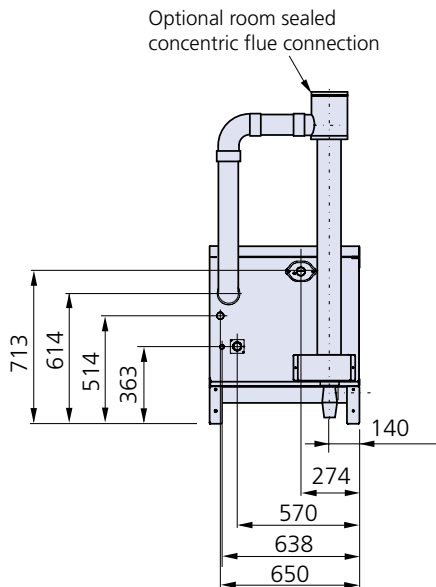
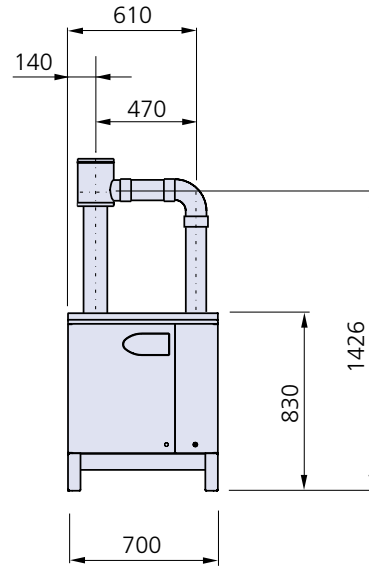
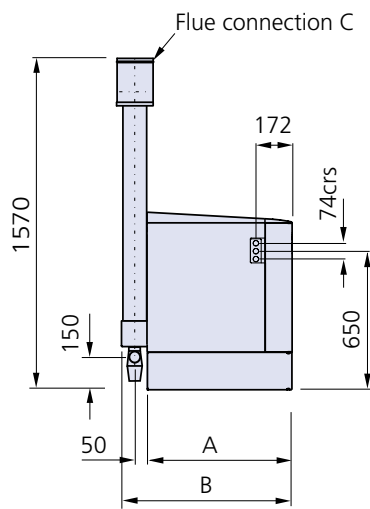
Model	Dimension	F40H	F50H	F60H	F70H	F85H	F100H	F125H	F150H
Casing depth	A	575						675	
Flue depth	B	695						795	
Flue diameter	C*	100							
Clearance - Rear	D	250 when using Hamworthy Pipework Kit							

C\* – the boiler flue connection is 100mm diameter, also suitable for 80/125 or 100/150 concentric flue. Kits are available to for longer flue runs with twin duct systems to 100 and 130mm diameter.

# Dimensional Details

## Fleet Horizontal Boilers

### Optional Room Sealed Flue Layout



**Note:**

The location of the optional room sealed flue connection is shown to accommodate the Fleet Horizontal pipe kit, which is positioned above the boiler casing. If this pipe kit is not being used, then the height of the connection can be reduced.

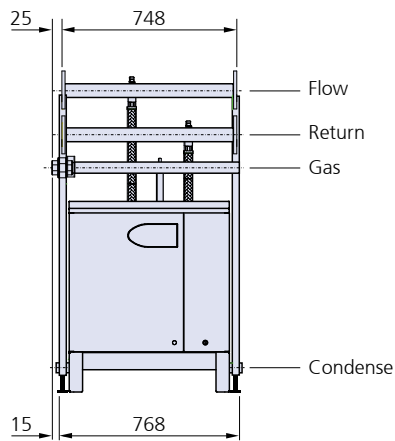
For full details of flue systems for Fleet Horizontal boilers, refer to pages 24 to 33.

All dimensions in mm.

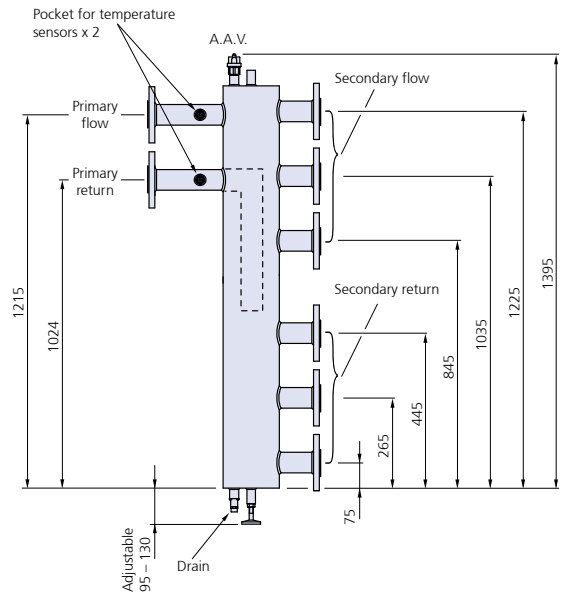
# Dimensional Details

## Fleet Horizontal Boiler Pipe Kits

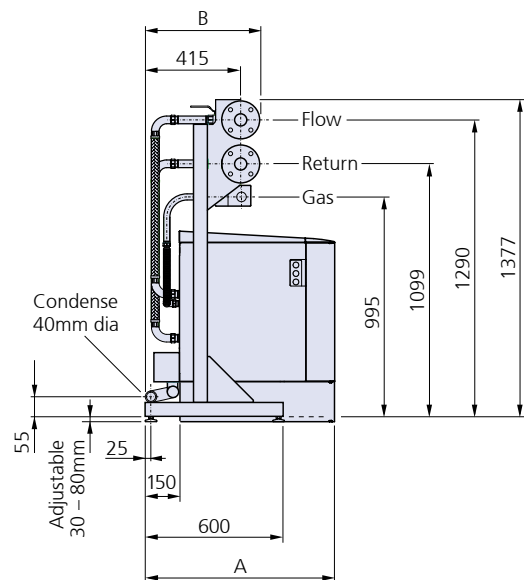
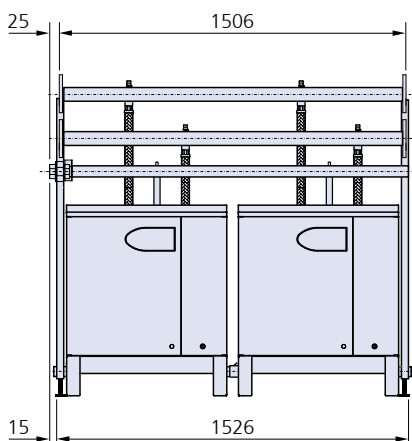
### Single Boiler Arrangement



### Low Loss Header - Three Pair Connections (6 Port)



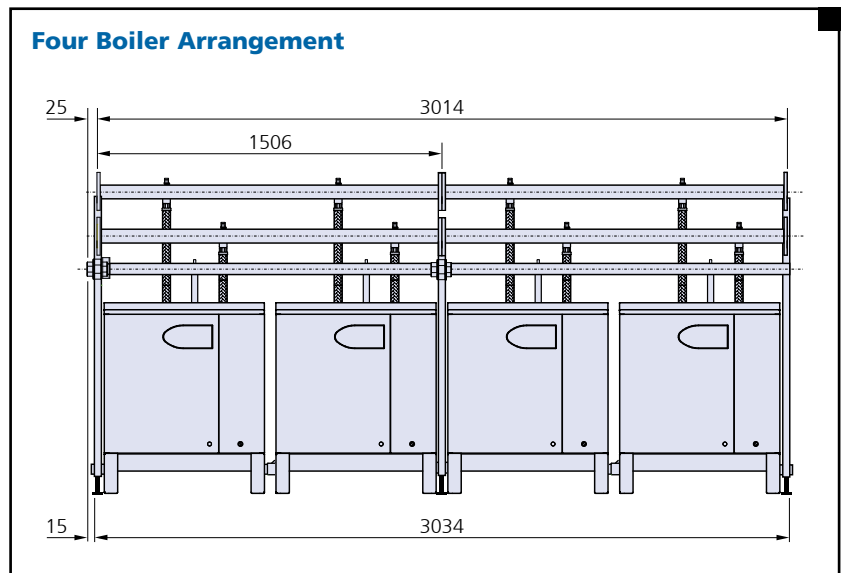
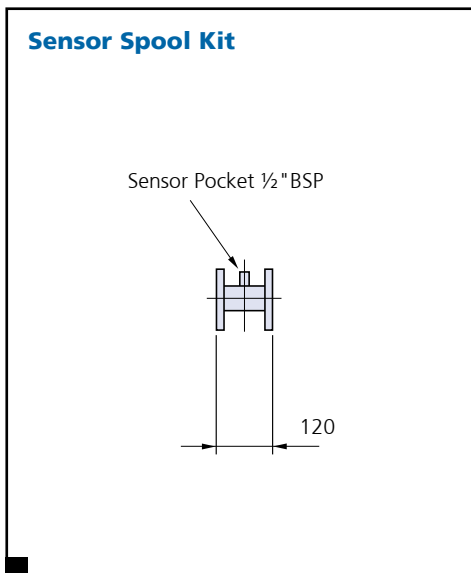
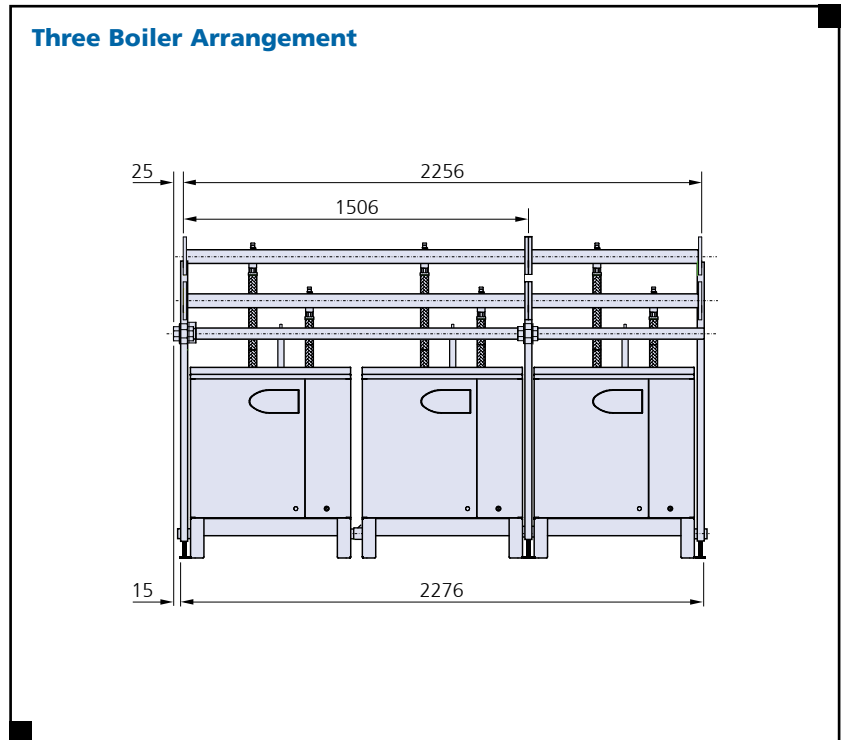
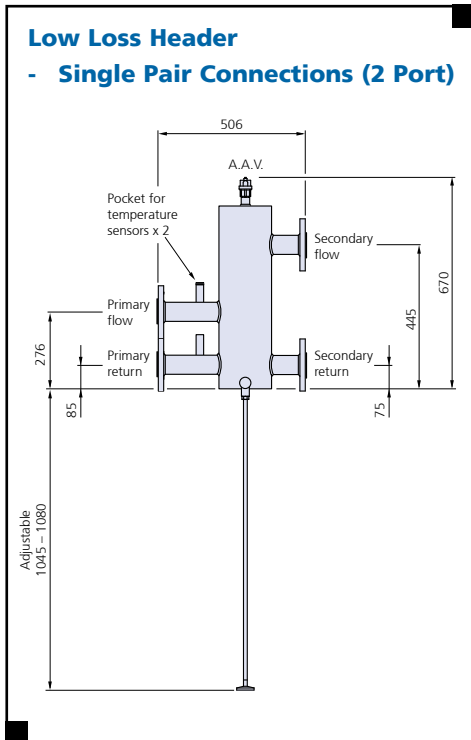
### Two Boiler Arrangement



Model	Dimension	F40H	F50H	F60H	F70H	F85H	F100H	F125H	F150H
Overall depth	A				725				825
Header depth	B				498				508
Flow					DN50 - PN16				DN65 - PN16
Return					DN50 - PN16				DN65 - PN16
Gas					R1½"				R2"

# Dimensional Details

## Fleet Horizontal Boiler Pipe Kits



**Notes:**

1. Pipe work is supported on a freestanding frame and the boilers will be installed between the frames. Frame sets are supplied as a single boiler set or two boiler set, for connecting together on site.
2. System pipe connections can be made to either end of the pipe kit. Blanking flanges provided.
3. Low loss headers can be fitted to either end of the pipe kit.
4. Sensor spool kit comprises a pair of spool pieces for flow & return connections, and these can be fitted to either end of the pipe kit.
5. If low loss headers are used, then a sensor spool is not required.