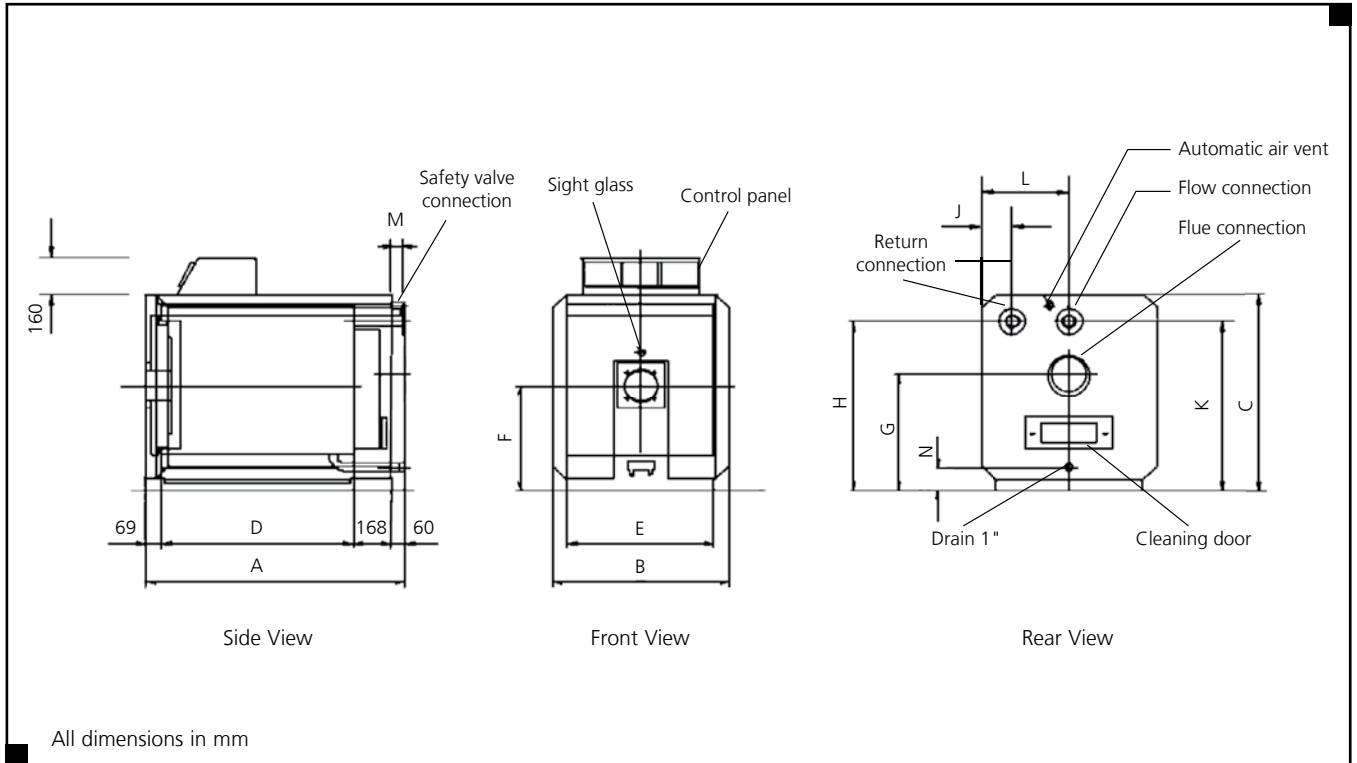
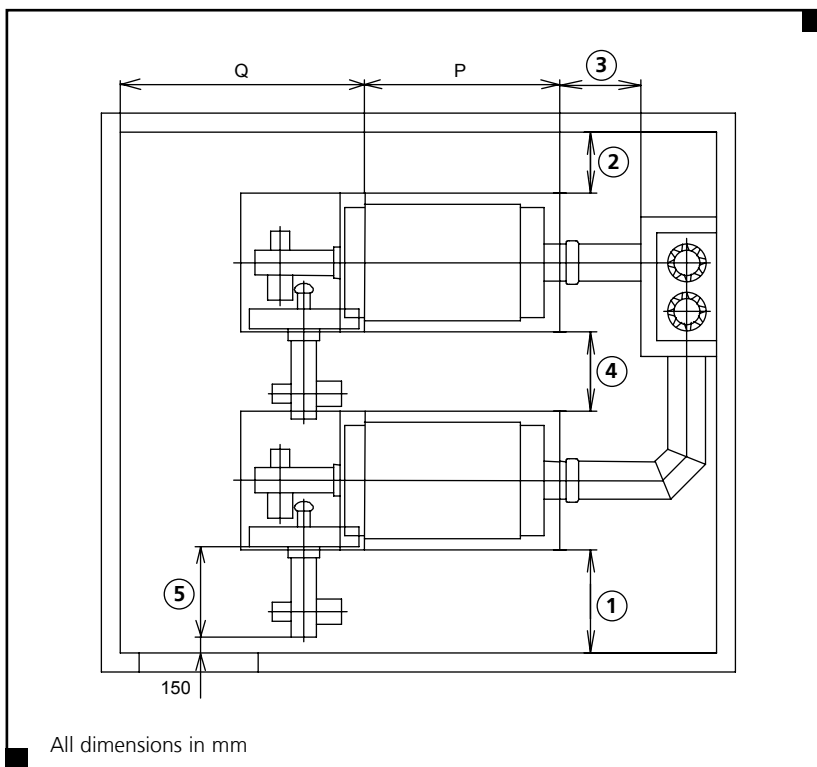


Dimensional Details

Ensbury LT Boilers



Model	Dimensions														
	Overall Length	Casing Width	Overall Height	Frame Length	Frame Width	Burner Centreline	Flue Height	Return (height) Connection	Return (width) Connection	Flow (height) Connection	Flow (width) Connection	Flow/Return Connection	Drain (height) Connection	Boiler Shell Length	Front Clearance
	A	B	C	D	E	F	G	H	J	K	L	M	N	P	Q
ELT 70	1141	770	880	844	640	470	520	757	135	757	385	60	100	1015	1220
ELT 90	1141	770	880	844	640	470	520	757	135	757	385	60	100	1015	1220
ELT 120	1283	870	955	986	740	500	550	835	185	835	435	70	88	1155	1310
ELT 145	1283	870	955	986	740	500	550	835	185	835	435	70	88	1155	1310
ELT 165	1483	870	955	1186	740	500	550	835	185	835	435	70	88	1355	1310
ELT 190	1483	870	955	1186	740	500	550	835	185	835	435	70	88	1355	1310
ELT 225	1483	920	1040	1186	790	550	600	933	185	900	460	80	103	1355	1310
ELT 260	1742	920	1040	1445	790	550	600	933	185	900	460	80	103	1445	1310
ELT 300	1742	920	1040	1445	790	550	600	933	185	900	460	80	103	1445	1310
ELT 335	1742	1000	1120	1445	870	590	640	933	145	978	500	80	104	1445	1310
ELT 370	1742	1000	1120	1445	870	590	640	933	145	978	500	80	104	1445	1310
ELT 440	1998	1068	1208	1701	938	624	674	1069	160	1053	534	90	104	1701	1600
ELT 510	1998	1068	1208	1701	938	624	674	1069	160	1053	534	90	104	1701	1600
ELT 580	1998	1068	1208	1701	938	624	674	1069	160	1053	534	90	104	1701	1600



Clearances for Access & Maintenance

Notes:

- ① The boiler door including burner should be able to swing open through 90° providing access to the burner head and combustion chamber for cleaning and maintenance.
- ② At least 200mm should be allowed to the side of the boiler for fitting the casing. After fitting the casing the boiler may be moved closer to the wall, but no closer than 60mm. Burner clearance will be required if door handing is opposite to that shown.
- ③ Rear clearance should be no less than 600mm, providing access to the rear cleaning door.
- ④ A minimum distance of 200mm must be maintained between boiler casings. If the door handing is as shown, then it should be noted that burner lengths vary by model, and this distance may need increasing.
- ⑤ Burner lengths vary by model.

Please contact our technical department for further assistance: Tel: 01202 662500.

Dimensions for P and Q are shown in the table on page 8.

Specification

Ensburly LT

Multiple Boiler Sequencing

Each boiler is provided with remote enable circuitry allowing the use of external boiler sequence controls with high/low and fully modulating burners.

Fully modulating burners are supplied with a temperature sensor that must be fitted in the flow pipe work immediately leaving the boiler, and wired directly to the burner. This sensor provides temperature feedback data from which the burner derives the correct load setting to maintain the temperature set-point.

Alternatively fully modulating burners can be specified with optional controls, to provide full BMS compatibility using a 0-10 volt analog signal to set the load performance of the burner within its operating band. This option must be stated at the time of ordering.

Low Flow Rate

Owing to the design of the Ensburly boiler it is not necessary to maintain flow through the boiler as there is sufficient thermal mass to absorb residual combustion heat, without tripping the high limit thermostat.

This allows more flexible heating system design with no differential temperature restraint at the boiler, and eliminates the requirement for primary circuit pumps or boiler shunt pumps, so reducing energy consumption.

Pressures and Temperatures

Ensburly boilers are suitable for operation on open vented or pressurised systems with a minimum head pressure of 0.5 bar and a maximum operating pressure of 4.0 bar.

Maximum flow temperature is 90°C.

Minimum flow temperatures are 50°C oil fired and 60°C gas fired.