

Dorchester DR-RS Range

Room Sealed, Fully Automatic Direct Gas Fired Water Heaters



The Dorchester DR-RS range is designed to operate as a room sealed system, making it particularly suited to applications where a conventional flue is impractical, or where the heater is to be located closer to point of use. Units are available with either vertical or horizontal flue arrangements using twin duct or concentric flue systems.

The DR-RS range consists of 5 models with continuous outputs from 517 to 1965 litres/hour, based on a 44°C temperature rise. Storage capacities range from 265 to 324 litres. Two or more water heaters can be installed where there is demand for larger loads.

Options

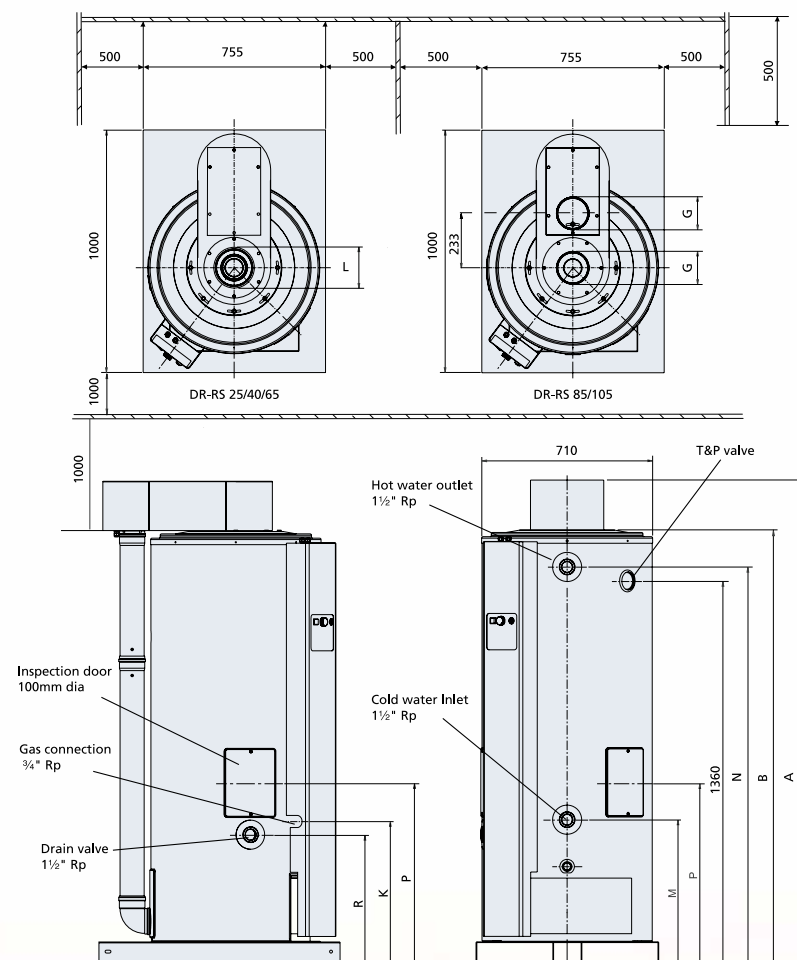
- Natural gas or LPG
- Unvented supply kit
- Electrical anode protection
- Close temperature control kit
- Top to bottom recirculation kit
- Flexible magnesium sacrificial anodes
- Horizontal or vertical flue terminal kit

The DR-RS is fitted with an atmospheric burner with fully automatic ignition, and is suitable for firing natural gas or LPG. Volt free contacts are fitted as standard, and are compatible with building management systems (BMS) for monitoring the operation and status of the unit.

At less than 60 dBA, the Dorchester DR-RS is quiet in operation and enables the unit to be installed close to point of use in a wide variety of locations. With a pallet based design, handling of the unit is made easier and this also reduces the risk of damage to the tank during transit and installation.

The DR-RS range is designed to meet the latest HSC requirements for the control of Legionellosis. Two large inspection doors provide access for servicing and suitable tappings are included to facilitate top to bottom recirculation.

The water heaters are suitable for open vented or unvented systems using an optional unvented supply kit, and are complete with a frost protection thermostat supplied as standard. In plant rooms with insufficient headroom clearance for fixed anodes, flexible magnesium sacrificial anodes may be specified as an option. For further details on room sealed flue systems, please refer to pages 20 & 21.



Model		DR-RS 25	DR-RS 40	DR-RS 65	DR-RS 85	DR-RS 105
Continuous output with 44°C Δt (80°F)	l/h	517	812	1295	1750	1965
	UK gal/h	114	179	285	385	432
Storage capacity	litres	324	312	265	265	265
	UK gal	71	69	58	58	58
Time to recover storage 44°C Δt (80°F)	mins	35	25	12	9	8
Heater output	kW	26.4	41.5	66.2	89.4	100.4
Maximum water pressure (open vented)	bar	8	8	8	8	8
	Psig	116	116	116	116	116
Gas input rate natural gas (G20)	m ³ /h	3.1	5.0	7.9	10.8	12.2
	ft ³ /h	109.5	176.6	278.9	381.4	430.8
Propane input gas rate at 37m bar (14.85 In wg) standard inlet pressure	m ³ /h	1.2	2.0	3.2	4.4	4.9
	ft ³ /h	42.3	70.6	112.4	153.7	173.6
Water outlet and inlet connection	in	1 1/2" Rp				
Gas connections	in	3/4" Rp				1" RP
Drain connection (hose connection) & Recirculation connection	in	1 1/2" Rp				
T & P valve connection	in	1"		1 1/2"		
Electrical supply		230V 50Hz 1Ph				

Dimensions in mm		DR-RS 25	DR-RS 40	DR-RS 65	DR-RS 85	DR-RS 105
Overall Height	A	1995	1995	2020	2020	2020
Cylinder height	B	1795	1795	1820	1820	1820
Twin duct air/flue	G	N/A			2 x 130	2 x 130
Concentric air flue	L	80/125	100/150	130/200	N/A	
Gas connection	K	600				750
Cold water inlet	M	600		590		
Hot water outlet	N	1640		1655		
Inspection door	P	630		625		
Drain	R	520		525		

Standard Features

- Room sealed
- Fully automatic ignition
- Control thermostat range 40°C to 70°C
- Multi-tube heat exchanger
- Magnesium sacrificial anodes
- Volt free contacts - for lockout & normal run
- Two inspection doors
- Frost protection thermostat

Flue Options
Page 20 - 21