

Dorchester DR-LP Range

Permanent Pilot, Multi-tube Direct Gas Fired Water Heaters



The Dorchester DR-LP range is the permanent pilot version, based on the DR-LA, and consists of 6 models with continuous outputs ranging from 621 - 1838 litres/hour, based on a 44°C temperature rise. Storage capacities range from 265 to 374 litres. Two or more water heaters can be installed in a modular configuration where there is demand for larger loads.

Options

- Natural gas or LPG
- Unvented supply kit
- Electrical anode protection
- Top to bottom recirculation kit
- Flexible magnesium sacrificial anodes
- Draught diverter with horizontal take-off

The DR-LP is fitted with an atmospheric burner with permanent pilot ignition. The water heaters are suitable for firing natural gas or LPG.

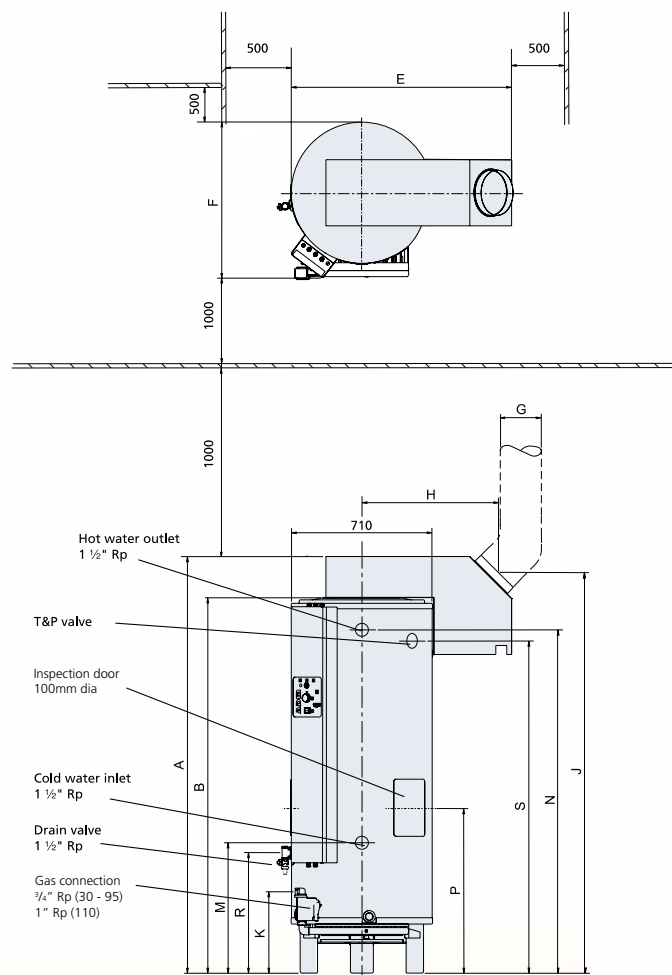
All Dorchester water heaters are constructed with high-grade carbon steel and utilise a vitreous enamel lining. Additional tank protection is provided by magnesium sacrificial anodes. In plant rooms with insufficient headroom clearance for fixed anodes, flexible magnesium sacrificial anodes may be specified as an option. The cylinder is covered with a 50mm layer of CFC free foam insulation to ensure that standing losses are kept to a minimum.

The DR-LP is suitable for open vented or unvented systems using an optional unvented supply kit.

The DR-LP range is designed to meet the latest HSC requirements for the control of Legionellosis. Two large inspection doors provide access for servicing and suitable tapings are included to facilitate top to bottom recirculation.

Where optional electrical anode protection is fitted, a permanent 230 volt 50Hz single phase power supply will be required, to ensure the water heater has 24 hour protection.

All models are available with an optional draught diverter to provide a horizontal flue take-off. This must be specified at the time of ordering.



Model		DR-LP 30	DR-LP 40	DR-LP 45	DR-LP 60	DR-LP 75	DR-LP 95
Continuous output with 44°C Δt (80°F)	l/h	621	822	965	1199	1427	1838
	UK gal/h	137	181	212	264	314	405
Storage capacity	litres	324	374	312	351	291	265
	UK gal	71	82	69	77	64	58
Time to recover storage 44°C Δt (80°F)	mins	32	28	20	16	13	9
Heater output	kW	31.7	42.0	49.3	61.2	72.9	93.9
Maximum water pressure (open vented)	bar	8					
	Psig	116					
Gas input rate natural gas (G20)	m ³ /h	4.0	5.4	6.3	7.8	9.4	12.1
	ft ³ /h	142.0	190.0	223.5	275.4	330.9	425.9
Propane input gas rate at 37m bar (14.85 l/wg) standard inlet pressure	m ³ /h	1.6	2.2	2.5	3.1	3.8	4.9
	ft ³ /h	57.2	76.6	90.1	110.9	133.4	171.6
Water flow and inlet connection	in	1 1/2" Rp					
Gas connections	in	3/4" Rp					
Drain connection (hose connection) & Recirculation Connection	in	3/4" NPT					
T&P Valve Connection	in	1"				1 1/2"	
Draught diverter spigot ID	mm	150	150	180	180	225	225
	in	6	6	7	7	9	9
Electrical supply		230V 50Hz 1Ph					

Dimensions in mm		DR-LP 30	DR-LP 40	DR-LP 45	DR-LP 60	DR-LP 75	DR-LP 95
Overall height	A	1900	2100	1900	2040	2025	2085
Cylinder height	B	1760	1960	1760	1900	1795	1810
Width including draught diverter	E	1100				1105	
Width including control column	F	800					
Flue spigot diameter	G	150		180		225	
Flue spigot centre line	H	640				675	
Flue spigot centre line	J	1840	2040	1840	2040	1935	2010
Gas connection	K	205			145	205	145
Cold water inlet	M	565			505	575	590
Hot water outlet	N	1605	1810	1605	1750	1640	1655
Inspection door	P	730			670	740	765
Drain	R	500	515	500	455	525	540
T&P valve	S	1550	1760	1550	1700	1595	1600

Standard Features

- Permanent pilot ignition
- Multi tube heat exchanger
- Control thermostat range 40°C to 70°C
- Magnesium sacrificial anodes
- Two inspection doors
- Combustion products discharge safety device
- Draught diverter with 45 degree take-off