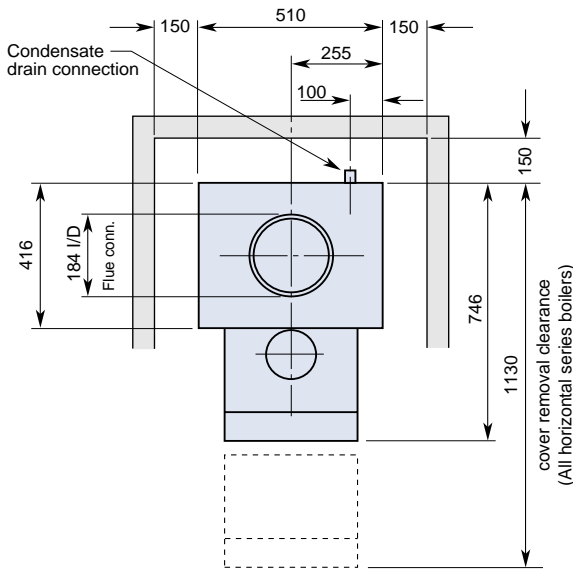
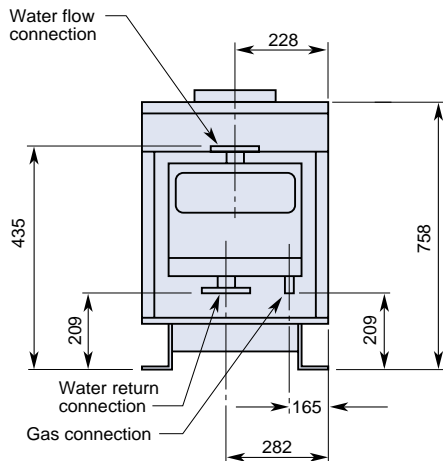


# Dimensional Details

## Wessex-HE 50 Horizontal Series

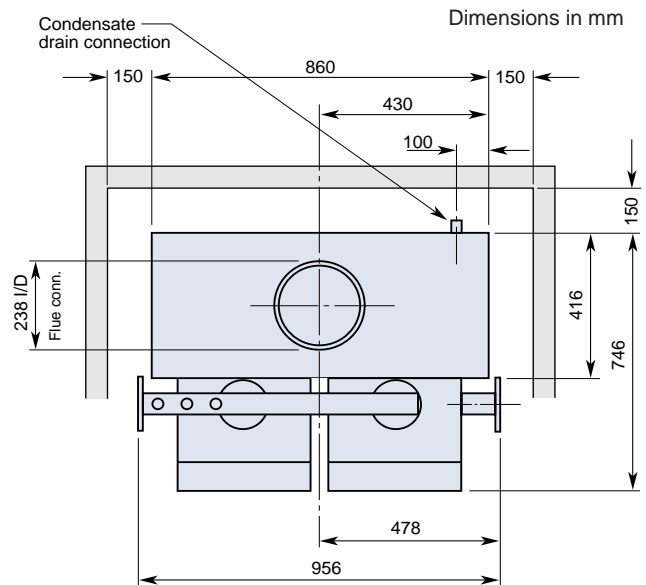


Plan View

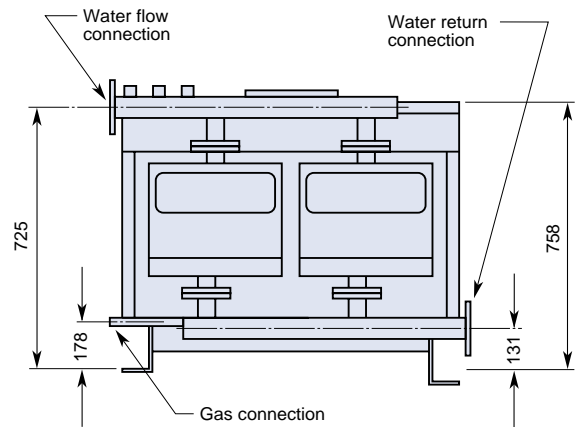


Front View

Wessex-HE 1 x 50H



Plan View



Front View

Wessex-HE 2 x 50H

### Flue Condensate Drain

Each module casing is fitted with a 19mm OD (16mm ID) drain and will take a  $\frac{3}{4}$ " OD tube compression fitting (Wade etc.)

The drain must be 15mm ( $\frac{1}{2}$ " ID minimum having a fall of at least  $3^\circ$  (approx. 5cm per metre) and consist of non-corrodible material leading to a gully via a waste trap.

### Multiple Module Manifold Boilers

Double and triple 50kW module boilers are supplied with flanged water flow and return manifolds and a gas supply manifold.

The water manifolds are fitted with the following connections:

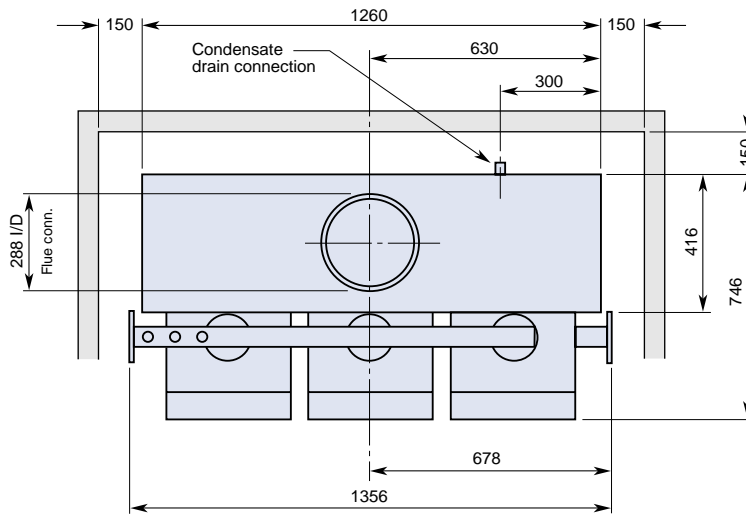
Rc  $\frac{1}{2}$ " instrument sockets (2)

Rc  $\frac{3}{4}$ " safety valve tapping

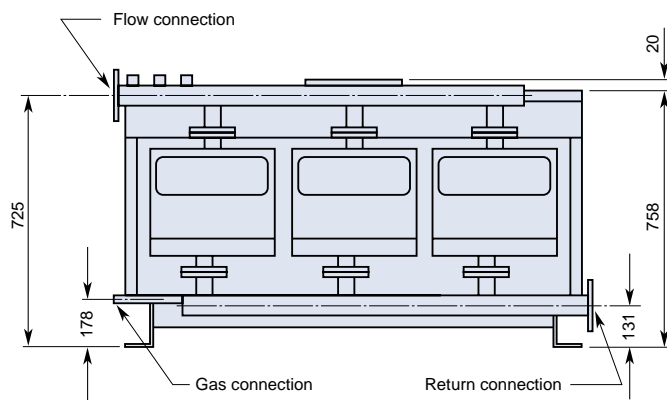
Rc  $\frac{3}{4}$ " drain tapping



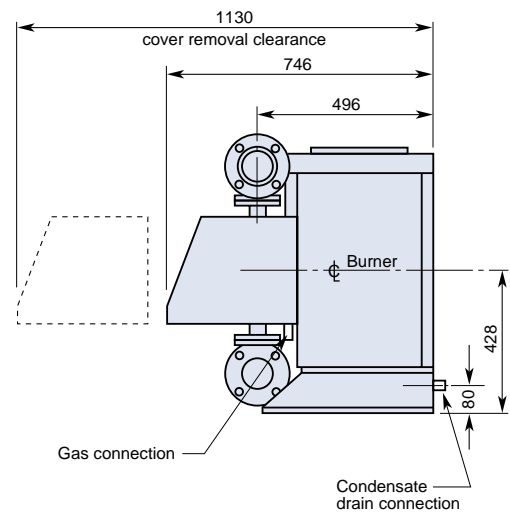
Dimensions in mm



Plan View



Front View



Side View

**Wessex-HE 3 x 50H**

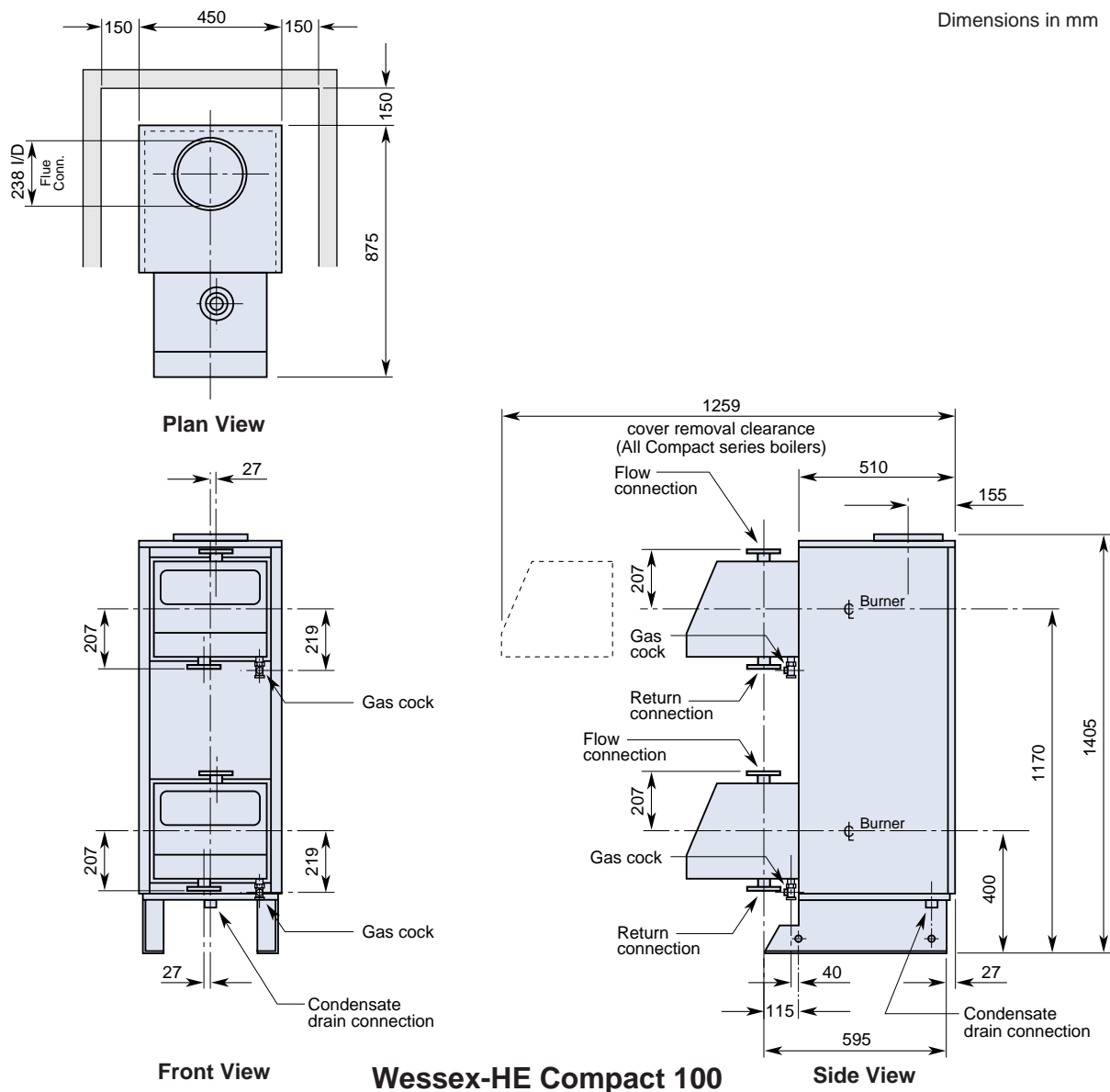
Boiler Model	No. of 50kW Modules	Output		Shipping Weight (kg) approx.	Flow & Return Flanged BS 4504 PN6	Gas Connection	Nominal Flue Bore
		kW	Btu/h x 1000				
1 x 50H	1	50	171	85	32	Rc <sup>1</sup> / <sub>2</sub> "	150
2 x 50H	2	100	341	165	50	R1"	200
3 x 50H	3	150	512	240	80	R1"	260

**Installation Clearances**

Wessex-HE 50 boilers should be positioned to allow a minimum clearance of 150mm from adjacent walls or equipment, to facilitate inspection. Access will be required to the rear of the boiler for connecting condensate drain pipework.

# Dimensional Details

## Wessex-HE 50 Compact Series



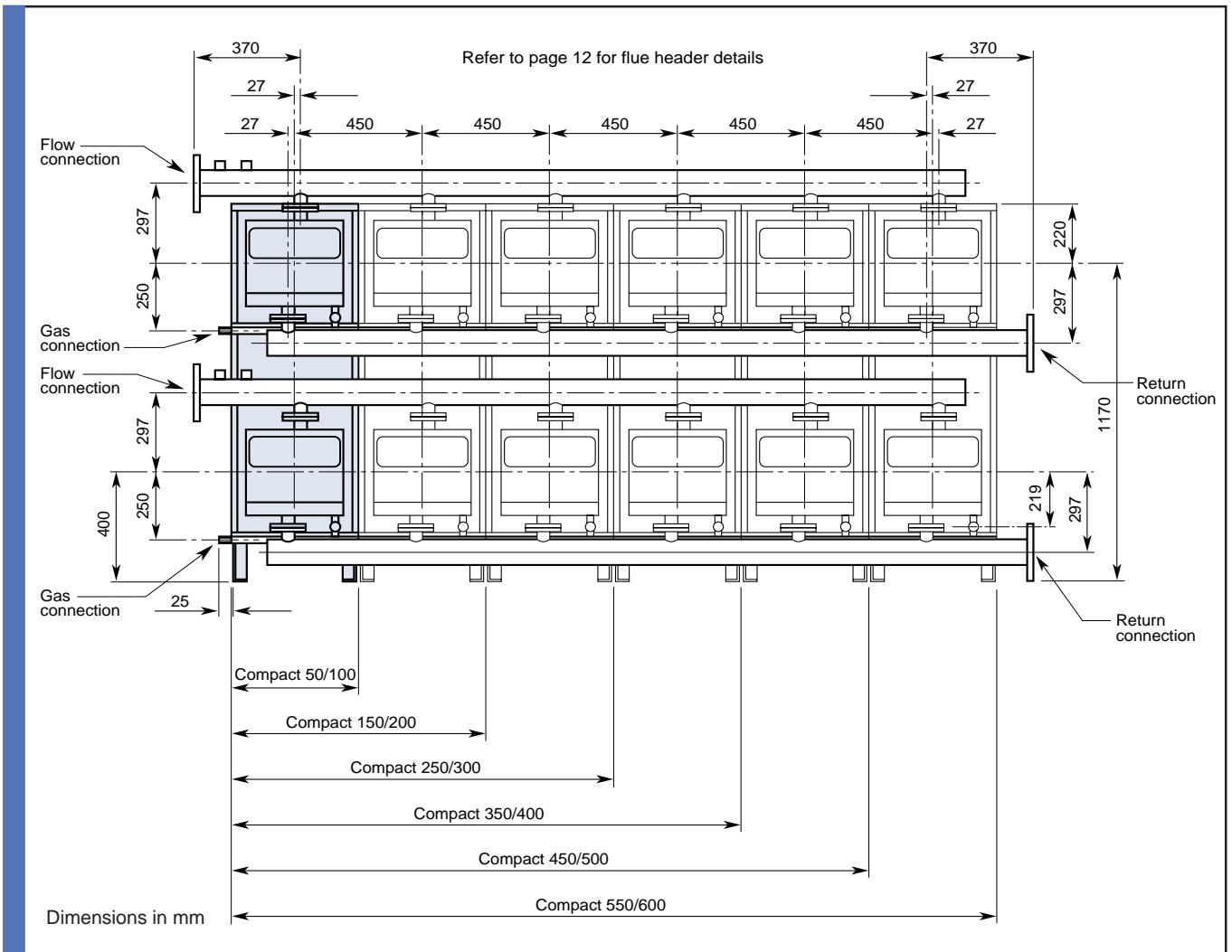
### Flue Condensate Drain

Each module casing is fitted with an Rc  $\frac{3}{4}$ " socket connection. The drain must be 15mm ( $\frac{1}{2}$ " ID minimum having a fall of at least 3° (approx. 5cm per metre) and consist of non-corrodible material leading to a gully via a waste trap.

### Multiple Module Boiler Manifolds

Multiple Compact boilers are supplied with flanged water flow and return manifolds and a gas supply manifold. The water manifolds are fitted with the following connections:

- Rc  $\frac{1}{2}$ " instrument sockets (2)
- Rc 1" safety valve tapping
- Rc 1" drain tapping



Boiler Model	No. of 50kW Modules	Output		Shipping Weight (kg) approx.	Flow & Return Flanges BS 4504 PN6	Gas Connections	No. of Compact Casings
		kW	Btu/h x 1000				
Compact 50	1*	50	171	90	32	Rc1/2"	1
Compact 100	2	100	341	165	32	Rc1/2"	1
Compact 150	3*	150	512	255	50	R1"	2
Compact 200	4	200	682	330	50	R1"	2
Compact 250	5*	250	853	420	80	R1"	3
Compact 300	6	300	1024	495	80	R1"	3
Compact 350	7*	350	1195	585	80	R1 1/4"	4
Compact 400	8	400	1365	660	80	R1 1/4"	4
Compact 450	9*	450	1536	750	80	R1 1/4"	5
Compact 500	10	500	1706	825	80	R1 1/4"	5
Compact 550	11*	550	1876	915	80	R1 1/4"	6
Compact 600	12	600	2047	990	80	R1 1/4"	6

\* Includes Compact 100 with one 50kW module blanked off. Multiple units are supplied with interlocking casings.

### Installation Clearances

Wessex-HE 50 boilers should be positioned to allow a minimum clearance of 150mm from adjacent walls or equipment, to facilitate inspection. Access will be required to the rear of the boiler for connecting condensate drain pipework.